

D-OCKWEILER
NON-METALLIC

DOCKWEILER GASKETS

**TOTAL TRACEABILITY FOR YOUR
HIGH PURITY SYSTEM**

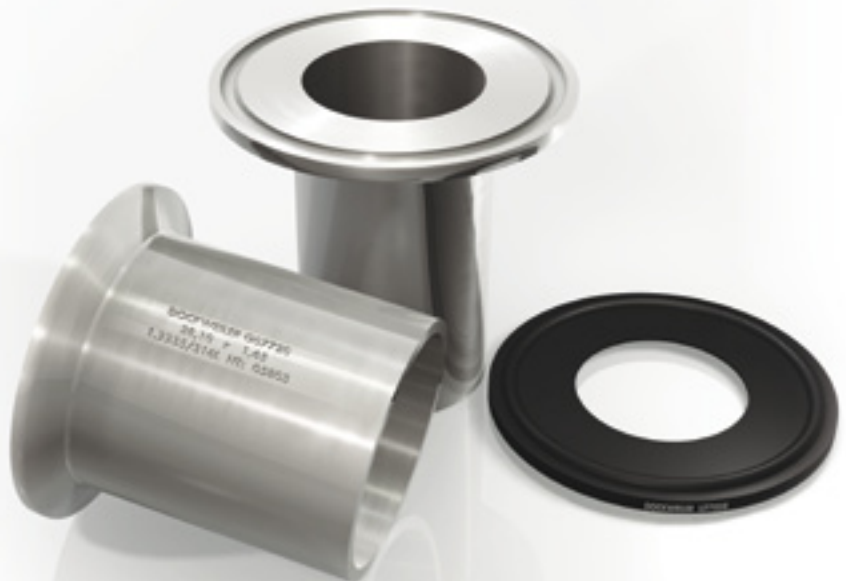


QUALITY, SERVICE, DEDICATION

Dockweiler is a leading manufacturer of stainless steel tube systems. Our product ranges live up to the **highest standards of surface quality and purity** whether it is to be used in biotechnology, the pharmaceutical or in the semiconductor industry. True quality makes no compromises. This is our central focus and applies not only to our products, but also to our consultation and customer service. Innovative products, expert advice, efficient service – all this provides the quality that Dockweiler customers value so highly.

All Dockweiler tube systems are specified from the melt to the end product. **Total Traceability**, an industry standard for stainless steel components, ends as soon as gaskets for triclamp connections are installed or replaced.

Dockweiler closes the traceability gap with its new fully traceable gasket program. The laser marking means reliable traceability and documentation both for the user and the auditor.



Dockweiler Standard Gaskets - what is different?

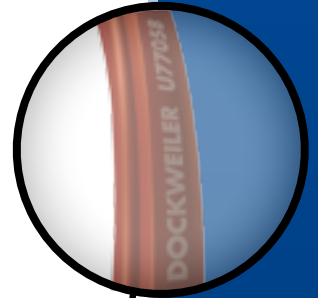
TOTAL TRACEABILITY – NOW FOR THE COMPLETE SYSTEM

HOW IS IT ACHIEVED?

- Dockweiler Gaskets are clearly and permanently marked
- The laser marking shows Dockweiler – Dockweiler No. / Batch No – Dimension – Flangesize - Material
- This means a high degree of security for the user – mix-ups after removal from the packaging are eliminated.

CERTIFIED HIGH QUALITY - PRODUCTION EXCLUSIVELY BY AUDITED SUPPLIERS IN THE USA AND EUROPE

Material:	EPDM, PTFE, Silicone
Cleanliness:	Cleaned after marking acc. to Dockweiler Specification
Packing:	Individually packed
Dimensions:	Imperial: ½" up to 6"
ISO:	13.50 up to 168.30 mm
Metric:	12.00 up to 154.00 mm



Dockweiler Standard Gaskets - Benefits

Total traceability for the Dockweiler laser engraved gaskets means:

IMPROVED SAFETY IN THE COMPLETE INSTALLATION AND PRODUCTION PROCESS

- No mix-ups of material (the right gasket for the application)
- Improved corrective action options
- Easier, safer and faster auditing

CLEANLINESS:

- No remnants of separating agents
- Less TOC contamination after replacement
- Shorter downtimes

DOCKWEILER QUALITY MANAGEMENT - PROVEN STANDARDIZED PROCESSES GUARANTEE CONSISTENT HIGH QUALITY

- Specified material in accordance with pharmaceutical standards
- Controlled geometries and tolerances
- Cleanliness
- Controlled surfaces

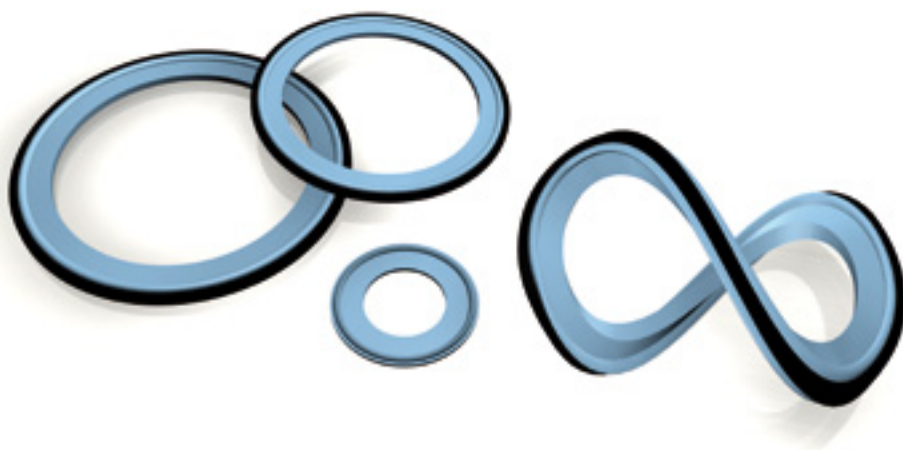
Closed surfaces and burr free geometries ensure optimum protection from contamination.

TUF-FLEX[®] - THE NEXT STEP FORWARD

A Tuf-Flex[®] gasket's contact surface is PTFE unitized to an EPDM inner core. This totally bonded construction provides the inert, non-stick benefits of PTFE with the memory of an elastomeric gasket without fear of risk of pigmentation.

Designed to meet critical requirements in biopharmaceutical, ultra-pure water, WFI (water for injection) and difficult aseptic processing applications.

Dimensions: 1/2" – 4"



TYPES OF GASKETS

TYPE I
GASKET



TYPE III
ENVELOPE GASKET



TUF-FLEX



PURITY, PERFORMANCE, FLEXIBILITY



DOCKWEILER GASKETS AT A GLANCE



Orifice Plates advance your system's performance, adjust flow rates, balance backflow and equalize back pressure during SIP procedures. EPDM; FKM



Tuf-Flex designed to meet critical requirements in biopharmaceutical, ultrapure water, WFI and difficult aseptic processing applications



The controlled Compression Gaskets cannot be over-tightened but controls clamp compression to exactly the correct amount, allowing the properly positioned gasket to make a perfect surface I.D. seal with ferrules



The Smart Gasket values is proven when validating sterility in high-purity pharmaceutical systems.



Screen gaskets provide prefiltration for critical membrane filters, coalescence of water vapour from process exhaust lines, particulate removal before fill and finish and more



All standards sanitary gaskets are moulded from FDA compliant compounds and USP class VI.



D·E·CKWEILER

NON - METALLIC